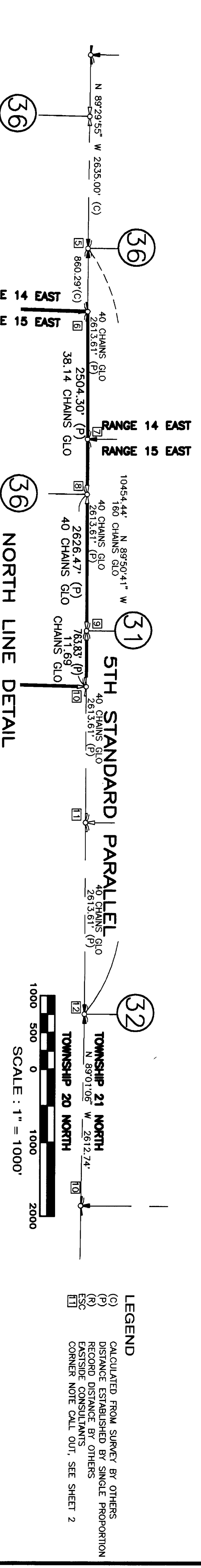


RONALD RIDGE

RECORD OF SURVEY

SECTION 6, TWP. 20 N., RGE. 15 E., W.M.

KITITAS COUNTY, WASHINGTON



LEGEND

- (C) CALCULATED FROM SURVEY BY OTHERS
- (P) DISTANCE ESTABLISHED BY SINGLE PROPORTION
- (R) RECORD DISTANCE BY OTHERS
- ESC EASTSIDE CONSULTANTS
- ESC CORNER NOTE CALL OUT, SEE SHEET 2

DATUM : WASHINGTON STATE PLANE
SOUTH ZONE, NAD 83(91)

ALL DISTANCES SHOWN ON THIS MAP ARE GROUND SCALE. THE COMBINED SCALE FACTOR (CSF) USED FOR THIS JOB IS 0.999870387. MULTIPLY CSF BY GROUND DISTANCE TO OBTAIN GRID DISTANCE. ALL BEARINGS SHOWN ARE GRID BEARINGS. THE CONVERGENCE ANGLE FOR THE PROJECT IS -0'18.45".

SURVEY INSTRUMENTATION :
SURVEYING PERFORMED IN CONJUNCTION WITH THIS RECORD OF SURVEY UTILIZED THE FOLLOWING EQUIPMENT AND PROCEDURES:

TOPCON GPS WITH POST PROCESSING
LEICA 1105 TOTAL STATION FOR CONVENTIONAL TRANSFERING
PROCEDURE USED : GPS AND FIELD TRAVERSE WITH ACCURACY MEETING OR EXCEEDING THE REQUIREMENTS OF WAC-332-130-090

NOTES:
ALL MONUMENTS SHOWN AS FOUND VISITED BETWEEN JULY AND OCTOBER 2004.
SEE SHEET 2 OF 3 FOR CORNER NOTES AND PROJECT NARRATIVE.
SEE SHEET 3 OF 3 FOR LEGAL DESCRIPTIONS.

SURVEYOR'S CERTIFICATE

THIS MAP CORRECTLY REPRESENTS A SURVEY MADE BY ME OR UNDER MY DIRECTION IN CONFORMANCE WITH THE REQUIREMENTS OF THE SURVEYING RECORDING ACT AT THE REQUEST OF AMERICAN FOREST RESOURCES IN OCTOBER 2004.

Blair E. Prigge
BLAIR E. PRIGGE
L.S. NO. 29278

Rick A. Foxworthy
RICK A. FOXWORTHY
L.S. NO. 35142

RECORDING CERTIFICATE

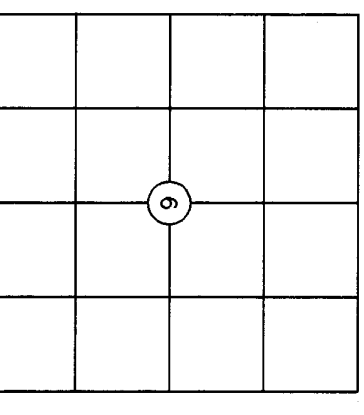
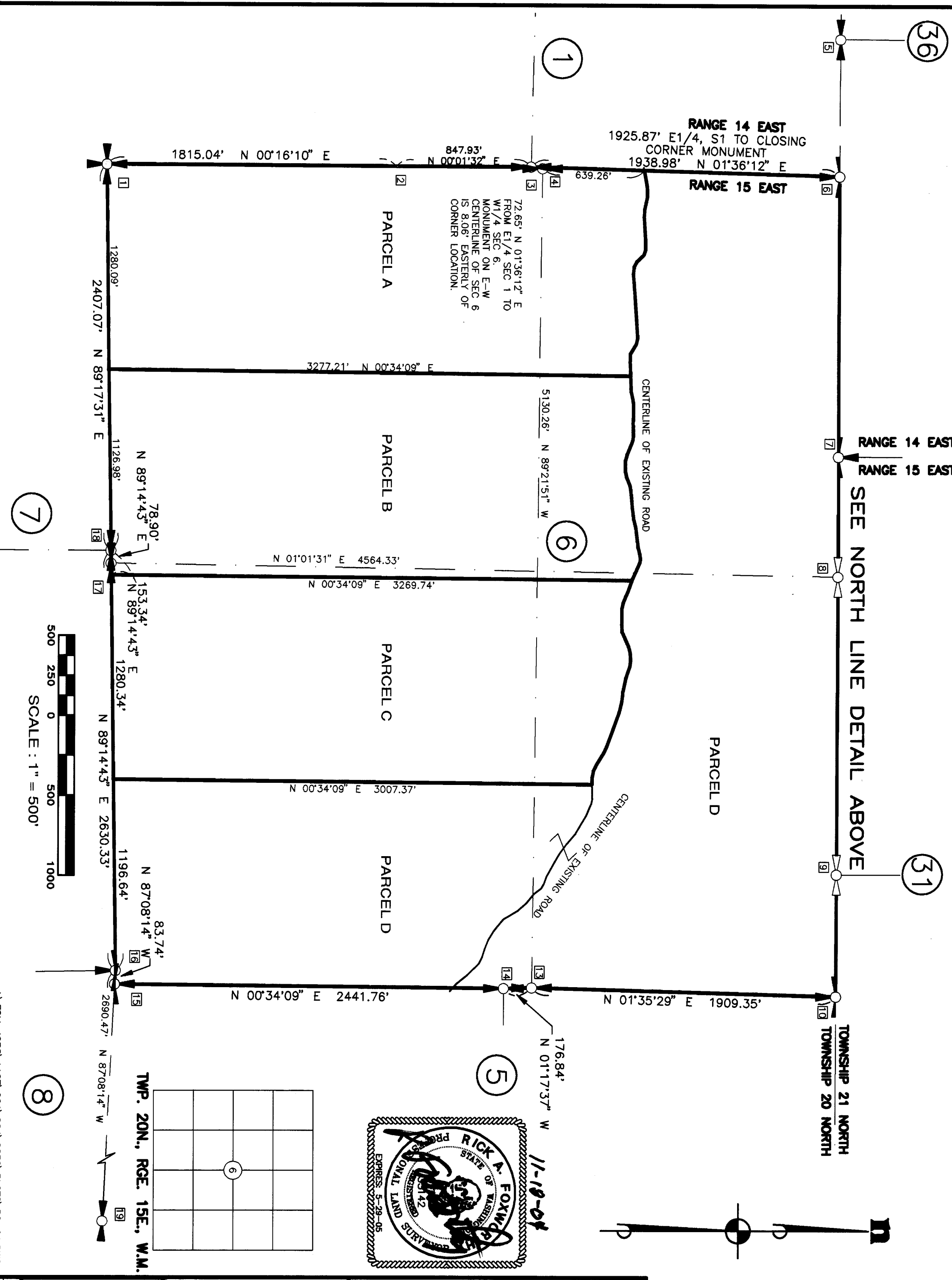
FILED FOR RECORD THIS 10th DAY OF December, 2004 AT 4:55 PM, IN VOLUME 20 OF SURVEYS ON PAGE 197 AT THE REQUEST OF AMERICAN FOREST RESOURCES.

David B. Babin SUPR. OF RECORDS
RECORDING NO. 200412100069

ESM CONSULTING ENGINEERS, LLC
720 S. 348th Street
Federal Way, WA 98003
www.esmcivil.com

Civil Engineering | Land Surveying
Public Works | Project Management
Landscape Architecture

JOB NO. 1107-001-004-0050 DATE: NOVEMBER 18, 2004
DRAWN: B.E.P.\B.R.S. SHEET 1 OF 3



RECORD OF SURVEY

SECTION 6, TWP. 20 N., RGE. 15 E., W.M.
KITITAS COUNTY, WASHINGTON

REFERENCE SURVEYS

RECORD OF SURVEY BY WESTERN PACIFIC ENGINEERING, 1993, RECORDING NO. 566465
RECORD OF SURVEY BY CRUISE AND NELSON, 1992, RECORDING NO. 548838
RECORD OF SURVEY BY CRUISE AND NELSON, 1988, RECORDING NO. 512614
RECORD OF SURVEY BY BELL & UPTON, 1997, RECORDING NO. 199712160014
RECORD OF SURVEY BY EASTSIDE CONSULTANTS, 1998, RECORDING NO. 199803060013
RECORD OF SURVEY BY CRUISE AND NELSON, 1986, RECORDING NO. 504686

SURVEY NOTES

IT IS NOT THE INTENT OF THIS SURVEY TO DEPICT THE EASEMENTS, COVENANTS, CONDITIONS OR RESTRICTIONS THAT AFFECT THIS PROPERTY.

CORNER NOTES

- 1] SOUTHWEST CORNER SECTION 6, T 20N, R 15E.
ESM POINT 324, PG 48
FOUND 5/8" REBAR W/ ORANGE PLASTIC CAP MARKED "KITZ 16915"
RPS FOUND:
6" PINE WITH 60D NAIL, EAST FACE, UP 0.5'
4" PINE WITH 60D NAIL, EAST FACE, UP 0.5'
6" PINE WITH ESC TAG, 3.1', SZTZE TO NE CORNER S12, T 20N, R 14E
2] FOUND LINE TREE
ESM PT. 323, PG 48
TAG ON TREE "EASTSIDE CONSULTANTS S1 T20N R14E, 27 CHAINS SOUTH TO SE CORNER"
3] EAST QUARTER CORNER, SEC 1, T 20N, R 14E.
ESM POINT 323, PG 47
FOUND USFS 3-1/4" ALUMINUM DISK IN 2-1/4" ALUMINUM PIPE, 0.5'
EXPOSED, LS 18894, 1987
RPS FOUND:
10' PONDEROSA PINE WITH SCAR HIGH AND LOW WITH TAG, NS6E, 22.2'
TO CORNER
14' PONDEROSA PINE WITH SCAR HIGH AND LOW WITH TAG, N40TW, 20.3' TO CORNER
4] WEST QUARTER CORNER, SEC 6, T 20N, R 15E.
ESM POINT 332, PG 57
FOUND 3" BRASS DISK ON 1" GALVANIZED PIPE, UP 0.9' IN ROCK PILE, LS 16915, 1995, MONUMENT IS 8.08' EAST OF CORNER POSITION
RPS FOUND:
24" FIR, OLD, BLAZE LOW, N45E, 23.3' TO CORNER
24" FIR WITH OLD SCRIB SCAR GROWN OVER, N6W, 23.8'
24" PONDEROSA PINE WITH TAG AND OLD SCRIB SCAR, S6 COR, S34W, 14.9'
HELD MONUMENT FOR ALIGNMENT OF E-W CENTER OF SECTION LINE, WEST CORNER IS AT INTERSECTION OF E-W LINE WITH EAST LINE OF SECTION 1, T 20N, R 14E.
5] SOUTH QUARTER CORNER SEC 36, T 21N, R 14E, STANDARD CORNER ESTABLISHED BY TIES TO RECORD OF SURVEY BY BELL AND UPTON LAND SURVEYING, RECORDING NO. 506870, VOLUME 15, PAGE 90.
6] NORTHWEST CORNER SEC 6, T 20N, R 15E, CLOSING CORNER
ESM POINT 322, PG 49
FOUND 1/2" REBAR WITH YELLOW PLASTIC CAP 13.11 FEET SOUTH OF STANDARD PARALLEL.
RPS FOUND:
METAL FENCE POST 0.8' SOUTH OF CORNER
7" FIR WITH ESC TAG WITH SCAR HIGH AND LOW, N46E, 15.65' TO CORNER
12" FIR WITH ESC TAG WITH SCAR HIGH AND LOW, NS0W, 7.7' TO CORNER
12" FIR WITH ESC TAG WITH SCAR HIGH AND LOW, S79W, 14.92' TO CORNER
7] SOUTHWEST CORNER SEC 31, T 21N, R 15E, STANDARD CORNER SEARCHED FOR CORNER, NOTHING FOUND.
CALCULATED POSITION BY SINGLE PROPORTION BETWEEN SOUTH QUARTER CORNER OF SECTION 36, T 21N, R 14E AND THE SOUTH QUARTER CORNER OF SECTION 32, T 21N, R 15E.
8] NORTH QUARTER CORNER SEC 6, T 20N, R 15E, CLOSING CORNER SEARCHED FOR CORNER, NOTHING FOUND.
CALCULATED POSITION BY SINGLE PROPORTION BETWEEN CALCULATED POSITION OF NORTHEAST SECTION CORNER AND FOUND POSITION OF NORTHWEST SECTION CORNER.
9] SOUTH QUARTER CORNER SEC 31, T 21N, R 15E, STANDARD CORNER SEARCHED FOR CORNER, NOTHING FOUND.
CALCULATED POSITION BY SINGLE PROPORTION BETWEEN SOUTH QUARTER CORNER OF SECTION 36, T 21N, R 14E AND THE SOUTH QUARTER CORNER OF SECTION 32, T 21N, R 15E.
10] NORTHEAST CORNER SEC 8, T 20N, R 15E, CLOSING CORNER SEARCHED FOR CORNER, NOTHING FOUND.
CALCULATED POSITION BY SINGLE PROPORTION.
- 11] SOUTHEAST CORNER SEC 31, T 21N, R 15E, STANDARD CORNER SEARCHED FOR CORNER, NOTHING FOUND.
CALCULATED POSITION BY SINGLE PROPORTION BETWEEN SOUTH QUARTER CORNER OF SECTION 36, T 21N, R 14E AND THE SOUTH QUARTER CORNER OF SECTION 32, T 21N, R 15E.
12] SOUTH QUARTER CORNER SEC 32, T 21N, R 15E.
CALCULATED POSITION FROM ROS BY CRUISE & NELSON, RECORDING NO. 504686, TIED TO EAST QUARTER CORNER OF SECTION AND THE TWO SOUTH CORNERS OF LOT C OF SAID ROS.
13] EAST QUARTER CORNER SEC 6, T 20N, R 15E.
ESM POINT 326, PG 51
FOUND 3" BRASS DISC MORTARED IN ROCK FACE ON STEEP SLOPE MARKED "1/4 S6, EASTSIDE CONSULTANTS, T20N, R15E, 1999, LS 33487
RPS FOUND:
17" FIR WITH SCAR SCRIBED "1/4 S6 RP", NS6E, 18.9' TO CORNER
9" FIR WITH SCAR SCRIBED "1/4 S6 RP" WITH 60D NAIL IN WEST FACE, SIDE, 18.7' TO CORNER
14] WEST QUARTER CORNER SEC 5, T 20N, R 15E.
ESM POINT 325, PG 49
FOUND 3" BRASS DISC IN 1" GALVANIZED PIPE
RPS FOUND:
11" SILVER FIR WITH SCAR SCRIBED "1/4 SS" WITH 60D NAIL, 1.5' FROM BASE N30E, 19.0' TO CORNER
10" SILVER FIR WITH SCAR AND SCRIBED "1/4 SS" WITH 60D NAIL, 2.0' FROM BASE N75W, 21.2' TO CORNER
15] SOUTHEAST CORNER SEC 6, T 20N, R 15E.
ESM POINT 334, PG 60
FOUND 1/2" REBAR WITH ORANGE PLASTIC CAP MARKED "KITZ 16915"
RPS FOUND:
26" FIR WITH OLD SCARS, S25E, 18.5' TO CORNER
24" PONDEROSA PINE WITH ESC TAG, S41.15W, 23.8' TO CORNER
30" PONDEROSA PINE WITH SCARS, EAST, 7' TO CORNER
HELD MONUMENT FOR N-S LINE, MONUMENT IS 7.09' SOUTH OF CORNER.
16] NORTHEAST CORNER SEC 7, T 20N, R 15E.
ESM POINT 383, PG 146
FOUND 1/2" REBAR AND RED PLASTIC CAP MARKED "KITZ 16915", 0.1' EXPOSED.
RPS FOUND:
28" FIR WITH TWO TAGS, ESC 50d NAIL WEST FACE, N26W, 4.6' TO CORNER, 1997, BOISE CASCADE, N40TW, 6' TO OFFSET CORNER, 1983, MEASURES 4.6' TO CORNER BY ESM.
9" FIR WITH HIGH BLAZE AND 50d NAIL SET IN SE FACE, 1.5' UP, N46E, 1.6' TO CORNER.
GLO ANGLE BREAK OF 252'.
17] SOUTH QUARTER CORNER SEC 6, T 20N, R 15E.
ESM POINT 330, PGS 39 & 53
1/2" REBAR WITH ORANGE PLASTIC CAP MARKED "KITZ 16915", MONUMENT IS 0.31 NORTH OF CORNER POSITION
RPS FOUND:
10" SILVER FIR WITH ESC TAG, S42E, 8.5' TO CORNER, TREE FALLEN OVER.
11" FIR WITH ESC TAG, N73E, 7.3' TO CORNER
12" PONDEROSA PINE WITH ESC TAG, N15W, 19.4' TO CORNER
HELD MONUMENT FOR ALIGNMENT OF N-S CENTER OF SECTION LINE.
SOUTH QUARTER CORNER IS AT INTERSECTION OF N-S LINE WITH NORTH LINE OF SECTION 7, T 20N, R 15E, FOUND MONUMENT ON NORTH LINE OF SECTION 7.
18] NORTH QUARTER CORNER SEC 7, T 20N, R 15E.
ESM POINT 331, PGS 39 & 53
FOUND 1/2" REBAR WITH YELLOW PLASTIC CAP MARKED "KITZ 16915"
RPS FOUND:
12" FIR WITH ESC TAG, S41W, 14.2' TO CORNER
10" FIR WITH ESC TAG, N49W, 16.2' TO CORNER
10" FIR WITH ESC TAG, N24E, 11.2' TO CORNER
19] NORTH QUARTER CORNER SEC 8, T 20N, R 15E.
ESM POINT 381, PG 145
FOUND 1/2" REBAR WITH RED PLASTIC CAP MARKED "KITZ 16915"
RPS FOUND:
9" PINE WITH ESC TAG, S49W, 3.6' TO CORNER
10" PINE, NS3E, 19.9' TO CORNER
22" PINE, S70W, 33.6' TO CORNER
S1/4 CORNER SECTION 5 MONUMENT BEARS S88°08'16"E, 41.34' FROM CORNER.

PROJECT NARRATIVE

THIS SURVEY OF SECTION 6, TOWNSHIP 20 NORTH, RANGE 15 EAST, WILLAMETTE MERIDIAN WAS COMPLETED TO PREPARE WITH ACCURATE BEARINGS AND DISTANCES THE LEGAL DESCRIPTIONS FOR THE FOUR PARCELS CREATED WITHIN SECTION 6. SECTION 6 IS A FRACTIONAL SECTION AND THE GOVERNMENT LAND OFFICE (GLO) SURVEY FOR THE NORTH TIER OF THE TOWNSHIP WAS COMPLETED IN A LATER SURVEY THAN THE SECTIONS SOUTH AND WEST OF SECTION 6. THE GLO SURVEY FOR SECTION 5 WAS COMPLETED AT THE SAME TIME AS SECTION 6. THE SECTIONS TO THE SOUTH AND WEST OF SECTION 6 WERE SURVEYED AT AN EARLIER DATE AND THE PATENT TO THOSE PROPERTIES OCCURRED BEFORE THE GLO SURVEY FOR THE NORTH TIER OF SECTIONS IN THE TOWNSHIP WAS COMPLETED. THEREFORE, THE GLO CORNERS FOR THE ADJOINER SECTION TO THE SOUTH AND WEST OF SECTION 6 ARE SENIOR TO THE GLO CORNERS FOR SECTION 6 AND LINE POINTS AND THE SECTIONS 6 WHERE DRAWN AS LINE POINTS AND THE CORNER LOCATION ADJUSTED TO INTERSECT THE SOUTH AND WEST LINE OF THE ADJOINER SECTIONS. ALONG THE SECTION LINE COMMON TO SECTIONS 5 AND 6, WHERE THE GLO SET QUARTER CORNERS FOR EACH SECTION, THE CORNERS HAD EQUAL WEIGHT AND THEREFOR THE SECTION LINE PASSES THROUGH THEM. ON THE NORTH LINE OF SECTION 6, THE STANDARD METHOD FOR REESTABLISHING THE STANDARD CORNERS AND CLOSING CORNERS BY SINGLE PROPORTIONATE MEASUREMENT WAS USED.



ESM CONSULTING ENGINEERS LLC
720 S. 348th Street
Federal Way, WA 98003

www.esmcivil.com

Civil Engineering | Land Surveying | Land Planning
Public Works | Project Management | Landscape Architecture

200412100069, W. 30 page 198 of 211 pages

RECORD OF SURVEY

SECTION 6, TWP. 20 N., RGE. 15 E., W.M.

KITTITAS COUNTY, WASHINGTON

LEGAL DESCRIPTIONS

PARCEL A

THAT PORTION OF FRACTIONAL SECTION 6, TOWNSHIP 20 NORTH, RANGE 15 EAST, WILLAMETTE MERIDIAN, KITTITAS COUNTY, WASHINGTON, BEING MORE PARTICULARLY DESCRIBED AS FOLLOWS:

COMMENCING AT THE SOUTHEAST CORNER OF SAID SECTION 6;

THENCE ALONG THE SOUTH LINE OF SAID SECTION, N 87°08'14" W, 83.74 FEET TO THE NORTHEAST CORNER OF SECTION 7, TOWNSHIP 20 NORTH, RANGE 15 EAST, WILLAMETTE MERIDIAN, KITTITAS COUNTY, WASHINGTON;

THENCE CONTINUING ALONG SAID SOUTH LINE, S 89°14'43" W, 2630.33 FEET TO THE NORTH QUARTER CORNER OF SAID SECTION 7;

THENCE CONTINUING ALONG SAID SOUTH LINE, S 89°17'31" W, 1126.98 FEET TO THE INTERSECTION OF A LINE THAT IS PARALLEL WITH THE EAST LINE OF THE SOUTHEAST QUARTER OF SAID SECTION 6 AND 3840.00 FEET DISTANT WESTERLY OF SAID EAST LINE (AS MEASURED PERPENDICULAR TO SAID EAST LINE) AND THE TRUE POINT OF BEGINNING;

THENCE CONTINUING ALONG SAID SOUTH LINE, S 89°17'31" W, 1280.09 FEET TO THE SOUTHWEST CORNER OF SAID SECTION 6;

THENCE ALONG THE WEST LINE OF SAID SECTION 6, N 00°16'10" E, 1815.04 FEET TO A LINE TREE;

THENCE CONTINUING ALONG SAID WEST LINE, N 00°01'32" E, 847.93 FEET TO THE EAST QUARTER CORNER OF SECTION 1, TOWNSHIP 20 NORTH, RANGE 14 EAST, WILLAMETTE MERIDIAN, KITTITAS COUNTY, WASHINGTON;

THENCE CONTINUING ALONG SAID WEST LINE, N 01°36'12" E, 711.92 FEET TO THE CENTER OF AN EXISTING ROAD RUNNING GENERALLY EASTERLY AND WESTERLY;

THENCE ALONG THE CENTER OF SAID ROAD, THE FOLLOWING COURSES:

- N 79°40'01" E, 95.43 FEET;
 - N 83°35'43" E, 36.48 FEET;
 - S 89°23'21" E, 34.56 FEET;
 - S 77°25'40" E, 80.24 FEET;
 - S 86°59'00" E, 47.68 FEET;
 - N 86°30'08" E, 158.76 FEET;
 - S 89°29'29" E, 46.63 FEET;
 - S 71°51'50" E, 36.61 FEET;
 - S 43°11'00" E, 80.16 FEET;
 - S 63°44'08" E, 34.66 FEET;
 - S 82°44'18" E, 47.01 FEET;
 - N 85°13'47" E, 150.88 FEET;
 - N 86°23'22" E, 249.72 FEET;
 - S 78°19'11" E, 36.63 FEET;
 - S 59°08'27" E, 71.25 FEET;
 - S 86°19'42" E, 50.59 FEET;
 - N 87°36'59" E, 87.29 FEET TO SAID LINE THAT IS PARALLEL WITH THE EAST LINE OF THE SOUTHEAST QUARTER OF SAID SECTION 6 AND 3840.00 FEET WESTERLY OF SAID EAST LINE;
- THENCE ALONG SAID PARALLEL LINE, S 00°34'09" W, 3277.21 FEET TO THE TRUE POINT OF BEGINNING, CONTAINING 98.68 ACRES, MORE OR LESS.

PARCEL B

THAT PORTION OF FRACTIONAL SECTION 6, TOWNSHIP 20 NORTH, RANGE 15 EAST, WILLAMETTE MERIDIAN, KITTITAS COUNTY, WASHINGTON, BEING MORE PARTICULARLY DESCRIBED AS FOLLOWS:

COMMENCING AT THE SOUTHEAST CORNER OF SAID SECTION 6, WILLAMETTE MERIDIAN, KITTITAS COUNTY, WASHINGTON;

THENCE ALONG THE SOUTH LINE OF SAID SECTION, N 87°08'14" W, 83.74 FEET TO THE NORTHEAST CORNER OF SECTION 7, TOWNSHIP 20 NORTH, RANGE 15 EAST;

THENCE CONTINUING ALONG SAID SOUTH LINE, S 89°14'43" W, 2476.99 FEET TO A LINE THAT IS PARALLEL WITH THE EAST LINE OF THE SOUTHEAST QUARTER OF SAID SECTION 6 AND 2560.00 FEET DISTANT WESTERLY OF SAID EAST LINE (AS MEASURED PERPENDICULAR TO SAID EAST LINE) AND THE TRUE POINT OF BEGINNING;

THENCE CONTINUING ALONG SAID SOUTH LINE, S 89°14'43" W, 153.34 FEET TO THE NORTH QUARTER CORNER OF SAID SECTION 7;

THENCE ALONG SAID PARALLEL LINE, N 00°34'09" E, 3277.21 FEET TO THE CENTER OF AN EXISTING ROAD RUNNING GENERALLY EASTERLY AND WESTERLY;

THENCE ALONG THE CENTER OF SAID ROAD, THE FOLLOWING COURSES:

- N 87°36'59" E, 100.35 FEET;
 - N 77°48'51" E, 56.08 FEET;
 - N 85°03'40" E, 36.03 FEET;
 - S 87°59'13" E, 104.08 FEET;
 - N 89°05'58" E, 81.97 FEET;
 - S 82°22'16" E, 32.05 FEET;
 - S 67°11'56" E, 92.03 FEET;
 - S 75°10'49" E, 36.02 FEET;
 - S 89°49'50" E, 70.85 FEET;
 - N 77°59'07" E, 34.02 FEET;
 - N 68°14'56" E, 57.43 FEET;
 - N 81°11'29" E, 31.38 FEET;
 - N 84°52'41" E, 109.50 FEET;
 - N 82°33'37" E, 69.51 FEET;
 - N 76°28'25" E, 54.57 FEET;
 - N 83°00'08" E, 82.05 FEET;
 - N 82°05'51" E, 42.28 FEET;
 - N 75°52'50" E, 40.59 FEET;
 - N 82°20'32" E, 32.70 FEET;
 - S 82°06'14" E, 24.46 FEET;
 - S 65°39'53" E, 115.01 FEET;
 - S 70°13'16" E, 8.66 FEET TO SAID LINE THAT IS PARALLEL WITH THE EAST LINE OF SAID SOUTHEAST QUARTER OF SECTION 6 AND 2560.00 FEET DISTANT WESTERLY OF SAID EAST LINE;
- THENCE ALONG SAID PARALLEL LINE, S 00°34'09" W, 3269.74 FEET TO THE TRUE POINT OF BEGINNING, CONTAINING 96.45 ACRES, MORE OR LESS.

PARCEL C

THAT PORTION OF FRACTIONAL SECTION 6, TOWNSHIP 20 NORTH, RANGE 15 EAST, WILLAMETTE MERIDIAN, KITTITAS COUNTY, WASHINGTON, BEING MORE PARTICULARLY DESCRIBED AS FOLLOWS:

COMMENCING AT THE SOUTHEAST CORNER OF SAID SECTION 6;

THENCE ALONG THE SOUTH LINE OF SAID SECTION, N 87°08'14" W, 83.74 FEET TO THE NORTHEAST CORNER OF SECTION 7, TOWNSHIP 20 NORTH, RANGE 15 EAST, WILLAMETTE MERIDIAN, KITTITAS COUNTY, WASHINGTON;

THENCE CONTINUING ALONG SAID SOUTH LINE, S 89°14'43" W, 1196.64 FEET TO A LINE THAT IS PARALLEL WITH THE EAST LINE OF THE SOUTHEAST QUARTER OF SAID SECTION 6 AND 1280.00 FEET DISTANT WESTERLY OF SAID EAST LINE (AS MEASURED PERPENDICULAR TO SAID EAST LINE) AND THE TRUE POINT OF BEGINNING;

THENCE CONTINUING ALONG SAID SOUTH LINE, S 89°14'43" W, 1280.34 FEET TO A LINE THAT IS PARALLEL WITH SAID EAST LINE OF THE SOUTHEAST QUARTER OF SECTION 6 AND 2560.00 FEET DISTANT WESTERLY OF SAID EAST LINE (AS MEASURED PERPENDICULAR TO SAID EAST LINE);

THENCE ALONG SAID PARALLEL LINE, N 00°34'09" E, 3289.74 FEET TO THE CENTER OF AN EXISTING ROAD RUNNING GENERALLY EASTERLY AND WESTERLY;

THENCE ALONG THE CENTER OF SAID ROAD THE FOLLOWING COURSES:

- S 70°13'16" E, 79.60 FEET;
 - S 63°55'23" E, 26.77 FEET;
 - S 69°19'43" E, 44.71 FEET;
 - S 78°09'06" E, 33.20 FEET;
 - S 89°03'42" E, 102.80 FEET;
 - N 86°52'19" E, 46.67 FEET;
 - N 65°56'55" E, 99.04 FEET;
 - N 74°48'16" E, 39.62 FEET;
 - N 86°14'15" E, 46.05 FEET;
 - S 83°20'40" E, 40.64 FEET;
 - S 71°16'36" E, 76.51 FEET;
 - S 77°58'14" E, 88.64 FEET;
 - S 83°05'26" E, 61.74 FEET;
 - S 76°30'26" E, 71.11 FEET;
 - S 70°20'03" E, 112.31 FEET;
 - S 70°06'38" E, 115.73 FEET;
 - S 63°54'50" E, 43.85 FEET;
 - S 57°38'16" E, 84.43 FEET;
 - S 66°09'48" E, 42.61 FEET;
 - S 78°48'04" E, 42.53 FEET;
 - N 89°56'58" E, 44.60 FEET TO SAID LINE THAT IS PARALLEL WITH THE EAST LINE OF SAID SOUTHEAST QUARTER OF SECTION 6 AND 1280.00 FEET DISTANT WESTERLY OF SAID EAST LINE;
- THENCE ALONG SAID PARALLEL LINE, S 00°34'09" W, 3007.37 FEET TO THE TRUE POINT OF BEGINNING, CONTAINING 93.31 ACRES, MORE OR LESS.

PARCEL D

THAT PORTION OF FRACTIONAL SECTION 6, TOWNSHIP 20 NORTH, RANGE 15 EAST, WILLAMETTE MERIDIAN, KITTITAS COUNTY, WASHINGTON, BEING MORE PARTICULARLY DESCRIBED AS FOLLOWS:

BEGINNING AT THE SOUTHEAST CORNER OF SAID SECTION 6;

THENCE ALONG THE SOUTH LINE OF SAID SECTION, N 87°08'14" W, 83.74 FEET TO THE NORTHEAST CORNER OF SECTION 7, TOWNSHIP 20 NORTH, RANGE 15 EAST, WILLAMETTE MERIDIAN, KITTITAS COUNTY, WASHINGTON;

THENCE CONTINUING ALONG SAID SOUTH LINE, S 89°14'43" W, 1196.64 FEET TO A LINE THAT IS PARALLEL WITH THE EAST LINE OF THE SOUTHEAST QUARTER OF SAID SECTION 6 AND 1280.00 FEET DISTANT WESTERLY OF SAID EAST LINE (AS MEASURED PERPENDICULAR TO SAID EAST LINE);

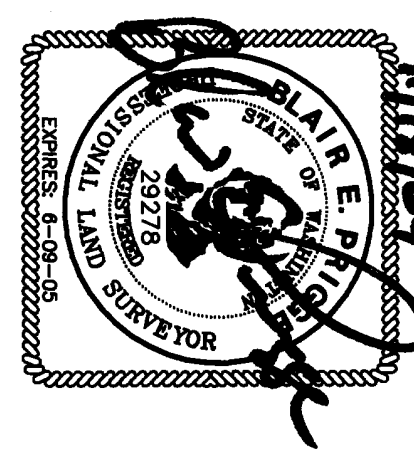
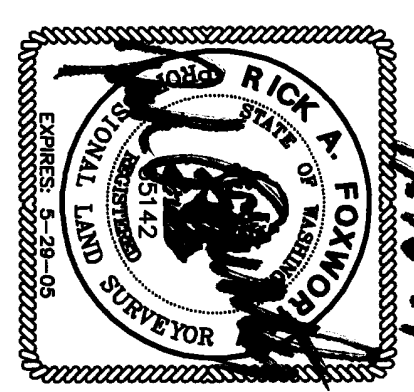
THENCE ALONG SAID PARALLEL LINE, N 00°34'09" E, 3007.37 FEET TO THE CENTER OF AN EXISTING ROAD RUNNING GENERALLY EASTERLY AND WESTERLY;

THENCE ALONG THE CENTER OF SAID ROAD, THE FOLLOWING COURSES:

- S 89°56'58" W, 44.60 FEET;
- N 78°48'04" W, 42.53 FEET;
- N 66°09'48" W, 42.61 FEET;
- N 63°54'50" W, 43.85 FEET;
- N 70°06'38" W, 115.73 FEET;
- N 70°20'03" W, 112.31 FEET;
- N 76°30'26" W, 71.11 FEET;
- N 83°05'26" W, 61.74 FEET;
- N 83°05'26" W, 61.74 FEET;
- N 77°58'14" W, 88.64 FEET;
- N 71°16'36" W, 76.51 FEET;
- N 83°20'40" W, 40.64 FEET;
- S 86°14'15" W, 46.05 FEET;
- S 74°46'16" W, 39.62 FEET;
- S 65°56'55" W, 99.04 FEET;
- S 86°52'19" W, 46.67 FEET;
- N 89°03'42" W, 102.80 FEET;
- N 78°09'06" W, 33.20 FEET;
- N 69°19'43" W, 44.71 FEET;
- N 63°55'23" W, 26.77 FEET;
- N 70°13'16" W, 88.26 FEET;
- N 65°39'33" W, 115.01 FEET;
- N 82°06'14" W, 24.46 FEET;
- S 82°20'32" W, 32.70 FEET;
- S 75°52'50" W, 40.59 FEET;
- S 82°05'51" W, 42.28 FEET;
- S 83°00'08" W, 82.05 FEET;
- S 76°28'25" W, 54.57 FEET;
- S 82°33'37" W, 69.51 FEET;
- S 84°52'41" W, 109.50 FEET;
- S 81°11'29" W, 31.38 FEET;
- S 68°14'56" W, 57.43 FEET;
- S 77°59'07" W, 34.02 FEET;

(PARCEL D CONTINUED)

- N 89°49'50" W, 70.85 FEET;
- N 75°10'49" W, 36.02 FEET;
- N 67°11'56" W, 92.03 FEET;
- N 82°22'16" W, 32.05 FEET;
- S 89°05'58" W, 81.97 FEET;
- N 87°59'13" W, 104.08 FEET;
- S 85°03'40" W, 36.03 FEET;
- S 77°48'51" W, 56.08 FEET;
- S 87°36'59" W, 100.35 FEET;
- S 87°36'59" W, 87.29 FEET;
- N 86°19'42" W, 50.59 FEET;
- N 59°08'27" W, 71.25 FEET;
- N 78°19'11" W, 36.63 FEET;
- S 86°23'22" W, 249.72 FEET;
- S 85°13'47" W, 150.88 FEET;
- N 82°44'18" W, 47.01 FEET;
- N 63°44'08" W, 34.66 FEET;
- N 43°11'00" W, 60.16 FEET;
- N 71°51'50" W, 36.61 FEET;
- N 89°29'29" W, 46.63 FEET;
- S 86°30'08" W, 158.76 FEET;
- N 86°59'00" W, 47.68 FEET;
- N 77°25'40" W, 80.24 FEET;
- N 89°23'21" W, 34.56 FEET;
- S 83°35'43" W, 36.48 FEET;
- S 79°40'01" W, 95.43 FEET TO THE WEST LINE OF SAID SECTION 6;
- THENCE ALONG SAID WEST LINE, N 01°36'12" E, 1227.07 FEET TO THE NORTHWEST CORNER OF SAID SECTION 6;
- THENCE ALONG THE NORTH LINE OF SAID SECTION 6, S 89°50'41" E, 5130.77 FEET TO THE NORTHEAST CORNER OF SAID SECTION 6;
- THENCE ALONG THE EAST LINE OF SAID SECTION 6, S 01°17'37" E, 176.84 FEET TO THE WEST QUARTER CORNER OF SECTION 5, TOWNSHIP 20 NORTH, RANGE 15 EAST, WILLAMETTE MERIDIAN, KITTITAS COUNTY, WASHINGTON;
- THENCE CONTINUING ALONG SAID EAST LINE, S 00°34'09" W, 2441.76 FEET TO THE TRUE POINT OF BEGINNING, CONTAINING 248.73 ACRES, MORE OR LESS.



11-18-04

11/18/04

ESM CONSULTING ENGINEERS LLC
720 S. 348th Street
Federal Way, WA 98003

www.esmcivil.com

Civil Engineering | Land Surveying | Land Planning
Public Works | Project Management | Landscape Architecture